

Positive Pathways for life.

Have fun learning basic life skills!

This workshop is designed for you to have some fun whilst learning some great skills to use in everyday life.

You will learn basic hospitality skills whilst preparing sandwiches and simple meals and learn how to look and feel your best covering basic hygiene and makeup skills. You will also learn some great communication skills to use in everyday life situations.

The accredited units included in the course are:

- BSBCMM201 Communicate in the workplace
- SITHCCC003 Prepare and present sandwiches
- SITXFSA001 Use hygienic practices for food safety



The non-accredited units are:

- CSO201709 Food literacy
- CSO201721 Nail care and nail health
- Look and feel your best

The Course

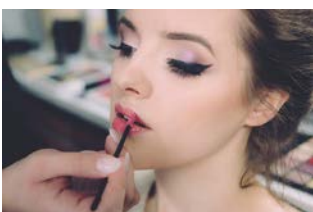
The course will run every Wednesday for 8 weeks from 9.30am – 2.30pm

Dates: Wednesday 19th February – Wednesday 8th April

Location: Delando Corporation

Address: 23 Delando St, Waratah NSW

Enrol today via the Central Coast Community College website.



Funding Eligibility

Central Coast Community College is an Adult and Community Education (ACE) provider and is supported by the NSW Department of Industry. As an ACE Provider, the College is able to provide a vast range of quality education to disadvantaged students, regional or remote students and key equity groups through a funded program.

To be eligible for a subsidised training, students must be:

A **disadvantaged student** who is one of the following:

- An aboriginal or Torres Strait Islander; or
- Disabled or have a dependent child, spouse or partner who is disabled; or
- A Commonwealth Government Welfare Recipient or have a dependent child, spouse or partner who is a Commonwealth Government Welfare Recipient; or
- Experiencing significant hardship as verified by a government agency, medical professional or support agency

AND

Experiencing one of the following barriers to participation in training:

- Very low literacy, language and/or numeracy skills
- Limited employability skills
- Persistent and ongoing personal issues impacting on their education
- Significant educational disadvantage, which impacts their ability to succeed in training

Students in a regional location, such as Singleton, may also be eligible if:

They are NOT disadvantaged; AND They live or work in a regional or remote location, such as Singleton; AND They cannot effectively access training under a Smart and Skilled program

Note: Evidence must be supplied to support your eligibility into this program. For more information on funding, please visit:

www.training.nsw.gov.au/ace/ace_cso_program.html